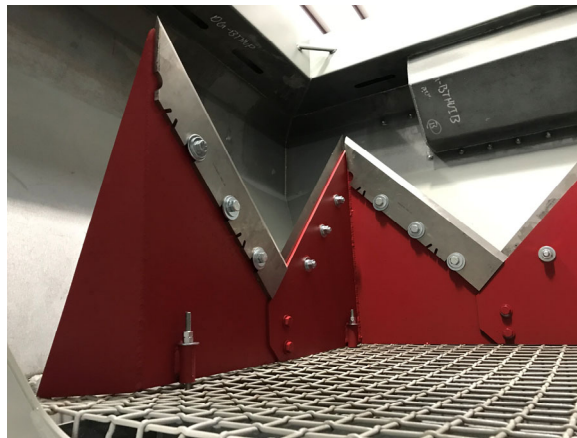
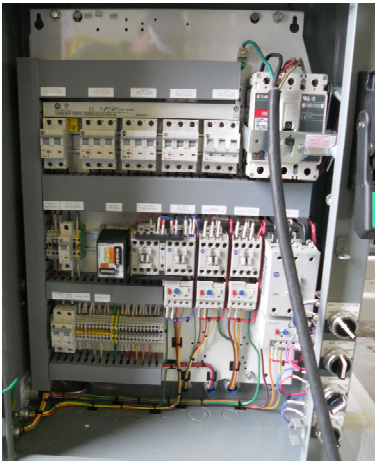




DIVERSIFIED STORAGE SYSTEMS  
(888) SILO-SYS (888) 745-6797

## BAZOOKA TUBE 1200



**BAZOOKA TUBE 1200** Portable transfer of super sacks to truck or rail car.  
Description: 30L x 8.5W x 14H (in transport mode) weight 9880.

Some innovative features include: (as pictured)

- 12" Auger with a 20hp electric motor - 33cfm
- WAM 400 pulse jet dust collector with fan (2400cfm)
- Sealed Loadout spout with electric up/down control
- Hydraulic operated height control
- Electric vibrator on hopper
- Air compressor
- 480v starter panel

46 Pioneer Parkway Ph # 903-919-0600  
Sulphur Springs, TX Fax # 903-919-0601

[www.CementSilos.com](http://www.CementSilos.com)