

DESIGN & BUILD REVIEW

IN ASSOCIATION WITH:



MEDIA INFORMATION

2018

Digital Magazine Awards 2015

 FINALIST



THE MAGAZINE

At Design & Build Review (DBR) we supply our readers from the architecture, planning and construction industries with all the latest business news and insights in a visually stunning and easy to use format. Instead of going with the traditional, print B2B magazine style of heavily text-led editorial pages, we have chosen to design our publication in a bold, bright and beautiful way that pleases the eye while giving our business-minded readers all the facts, data and analysis they expect from an industry magazine. Due to a strong growth in readership, and a rising demand for advertising space within the publication, in 2015 we increased the frequency of DBR from quarterly to monthly. The magazine has been free across both web and iPad versions since 2015, dramatically increasing our downloads. Into 2018, we continue to develop exciting plans for the publication, for the benefit of our readers and advertisers alike.

AN ESTABLISHED BRAND

DBR is one of 13 digital B2B magazines produced by our in-house team of dedicated writers, editors and designers. Originally launched on the Zmags platform in 2011, with a completely overhauled iPad version launched in April 2014, DBR has evolved into a title that pushes the boundaries of digital publishing. The platform offers our clients the opportunity to increase customer loyalty and build a stronger brand by delivering their message to a valuable readership, in a unique, engaging and interactive way. As part of a large business intelligence company, our publication analyses and anticipates industry trends, giving our readers truly timely and valuable news and analysis.

WHAT WE CAN DO FOR YOU

Whether you want to increase brand awareness, deliver a complex message or launch a new product, our digital magazine provides the perfect creative medium to communicate effectively with your audience in a fresh and engaging way.

EVERY EDITION IS...

- + Intuitively designed for an immersive user experience
- + Filled with in-depth, timely and informative editorial content
- + Delivered to a targeted audience through a powerful combination of distribution channels
- = **A UNIQUE WAY OF POSITIONING YOUR PRODUCTS**

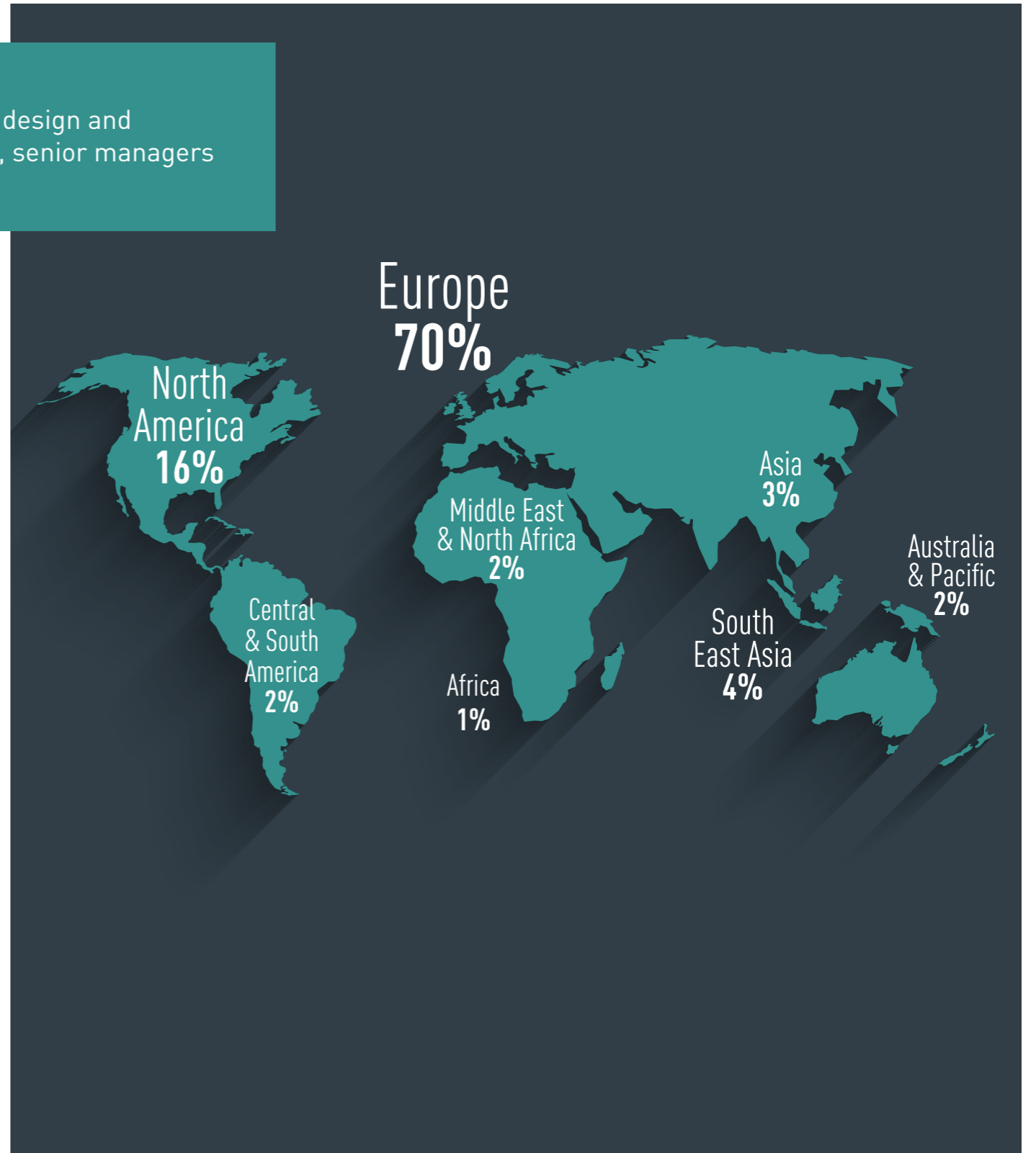


A WORLDWIDE REACH

We can help you communicate directly with the global architectural, design and construction industry: Our loyal readership is made up of executives, senior managers and buyers from across the globe.

A SNAPSHOT OF READERS

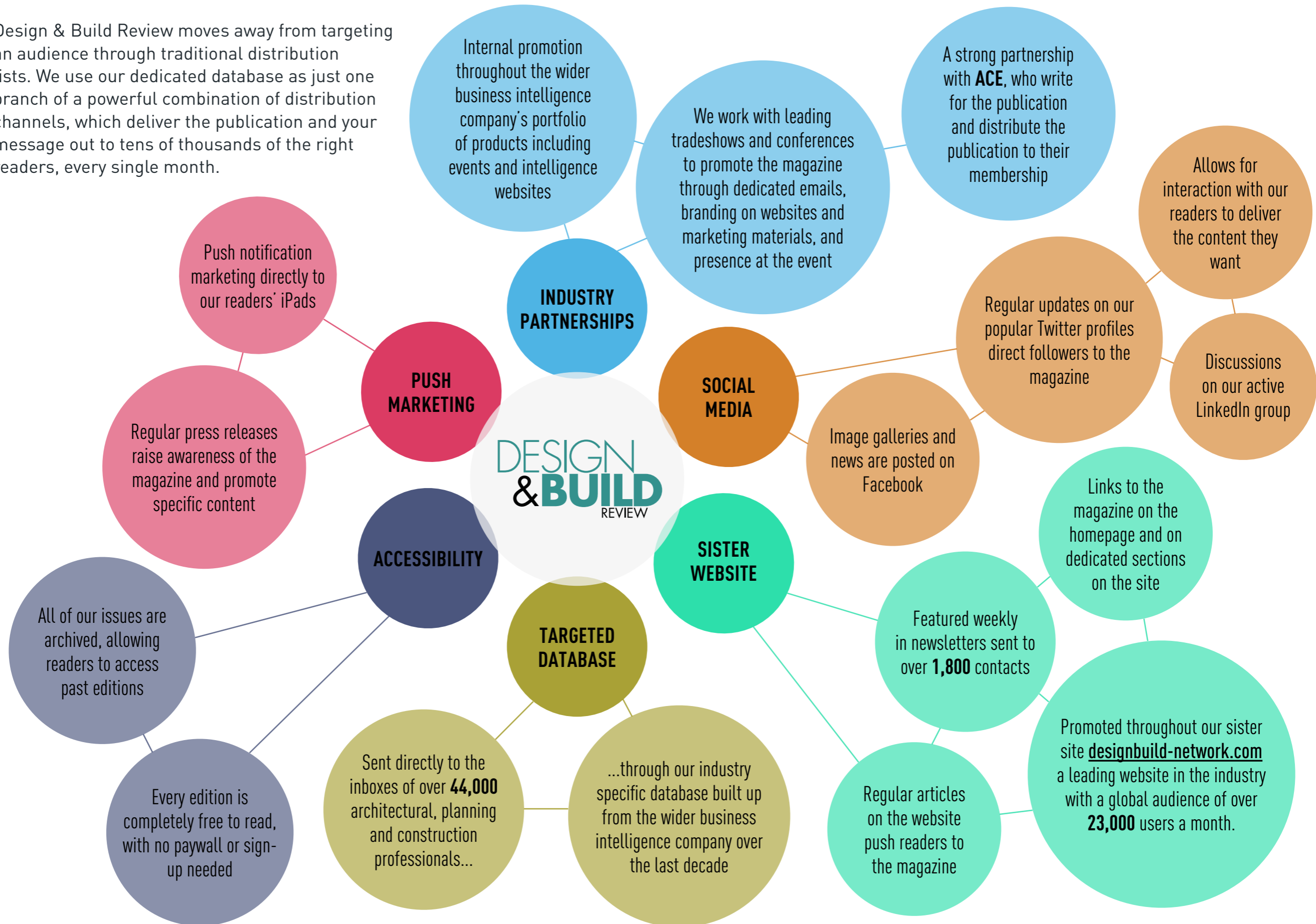
COMPANY	POSITION
CRAWFORD PARTNERSHIP	Director
DESIGN SOLUTIONS EUROPE	Production Director
PATTON GROUP	Managing Director
ALLAN JOYCE ARCHITECTS	Architect
INNOVIA FILMS LTD	Engineer
COLLINS AND HAYES LTD EUROPE	Design Director
RYDER HKS	Interior Designer
MORPHY RICHARDS EUROPE	Finance Director
SPA PROPERTIES	Manager
ATKINS ARCHITECTS	Director
PARSONS BRINCKERHOFF	Europe business development manager
SIKA GROUP	Manager



CONTINUED ON NEXT PAGE

READERSHIP: OUR POWERFUL AUDIENCE ENGAGEMENT STRATEGY

Design & Build Review moves away from targeting an audience through traditional distribution lists. We use our dedicated database as just one branch of a powerful combination of distribution channels, which deliver the publication and your message out to tens of thousands of the right readers, every single month.



OUR CONTENT WILL TRANSFORM YOUR CAMPAIGN

We remain dedicated to providing timely, in-depth industry analysis for our readers, meaning your advertisement will be placed alongside valuable editorial content consumed by a loyal readership.

- We are **objective and unbiased**. We produce content for our readers, giving our publication authority and credibility: **Our editorial is editorial; not advertorial.**
- Our content is **news-focused, reporting and analysing** what's happening right now in the industry. Moving away from the traditional B2B practice of primarily covering product-based and content and company press releases, we are dedicated to providing unique editorial content that **reacts to the ever-changing industry landscape**. This results in a **fresh magazine full of timely analysis** tailored to the interests of **decision-makers who need to stay informed**.
- This calendar shows a selection of topics we have planned in advance for the year. Remember, we aim to be reactive so our content plans are subject to change in order to accommodate key developments in the industry. We publish detailed plans for each issue three months ahead of the publication date.

For editorial enquiries please contact us at onlinemags@nridigital.com

FEBRUARY

- An architect's role in 2018
- Fall of the starchitect
- The future profession

ADVERT BOOKING DEADLINE: 05/01/18
ADVERT MATERIALS DEADLINE: 12/01/18

JUNE

- Morphing architecture
- Technology in design
- Smart buildings

ADVERT BOOKING DEADLINE: 04/05/18
ADVERT MATERIALS DEADLINE: 11/05/18

OCTOBER

- In-situ materials
- Beyond the statement skyscraper
- Local influences

ADVERT BOOKING DEADLINE: 07/09/18
ADVERT MATERIALS DEADLINE: 14/09/18

APRIL

- Green construction
- Biophilic design
- Water management

ADVERT BOOKING DEADLINE: 09/03/18
ADVERT MATERIALS DEADLINE: 16/03/18

AUGUST

- Bridge design
- Car-free cities
- City block design

ADVERT BOOKING DEADLINE: 06/07/18
ADVERT MATERIALS DEADLINE: 13/07/18

DECEMBER

- High-density housing
- Wellbeing in design
- Low-cost solutions to the housing shortage

ADVERT BOOKING DEADLINE: 02/11/18
ADVERT MATERIALS DEADLINE: 09/11/18

OUR CONTENT WILL TRANSFORM YOUR CAMPAIGN

Meet some of our staff who work together to bring Design & Build Review into the hands of our readers every month

EDITORIAL



SUSANNE HAUNER
GROUP EDITOR

Susanne is our group editor and was part of Design & Build Review's launch team. She has been working on the magazine since its inception with her team of experienced editors. Drawing on a strong background in digital publishing for B2B audiences, they have created a portfolio of cutting-edge magazines, covering the sectors energy, transport, defence, design-build, food and beverages, packaging and pharmaceuticals.



DANIEL GARRUN
COMMISSIONING
EDITOR

Daniel is the commissioning editor of Design & Build Review and the managing editor of our sister website designbuild-network.com. His team of writers and contributors keep their finger firmly on the pulse of the industry, uncovering the latest trends and technologies, keeping track of deals and policy decisions and gathering insights and opinions from industry insiders.

DESIGN



JOHN HAMMOND
LEAD DIGITAL
DESIGNER

John is our lead designer and heads up our creative team of digital designers. Together they have created a portfolio of publications that combine the pleasure of reading a traditional print magazine with the interactivity and immediacy of the web. With years of experience in creating stunning and unique digital adverts for our clients, our design team can help you present your message in a way that will impress and engage the target audiences.

MARKETING



CALLUM TYNDALL
PRODUCT
DEVELOPMENT

Callum heads up our multi-faceted marketing activities ensuring that our titles are being delivered to a global, yet specialised audience. He also looks after our product development, ensuring our portfolio is constantly evolving, offering the very best digital advertising opportunities to our clients.

SALES



DAVID LLOYD-WILLIAMS
SALES MANAGER

David is one of our senior sales managers. With over a decade of media sales experience, he played an integral role in the conception and launch of our digital titles. David now leads his teams in working hard to ensure that results are delivered for his clients, placing an emphasis on customer service.



STEVE MEAD
SALES MANAGER

Steve's 11 years of sales and customer service experience has seen him develop a successful team of account managers, the focus of which is geared towards delivering top quality products and results for his clients. Steve attends various exhibitions around the globe where he builds up personal relationships with his clients.

BRINGING YOUR VISION TO LIFE

All of our advertisers benefit from our in-house design team's expertise in creating beautiful and engaging adverts, allowing you to show off your brand with maximum impact. Our designers work directly with each client to create an advert that is tailored specifically to the client's requirements. From video ads to animated product galleries, and from stunning minimalist pages to complex interactive adverts with website-style in-article navigation – our designers have built it all.

MULTI PAGE ADVERTS

Our multi-page option gives you the freedom to add extra pages on a vertical scroll, allowing you to combine additional text, images, interactive elements or video content to create a package to suit your brand's needs.

INTERACTIVE LEAD PAGE

Full page advert with interactive elements and optional video content, linked to your website and/or app.

- Engage and inform potential clients
- Maximise brand visibility
- Increase brand awareness
- Generate new sales leads
- Drive traffic to your website
- Measure ROI

ADDITIONAL SCROLL PAGES

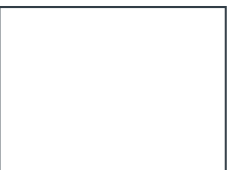

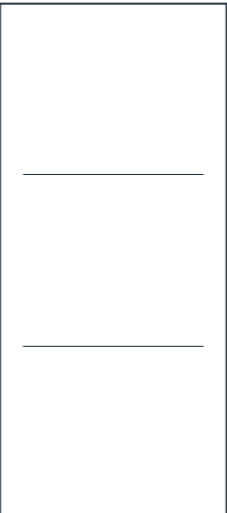
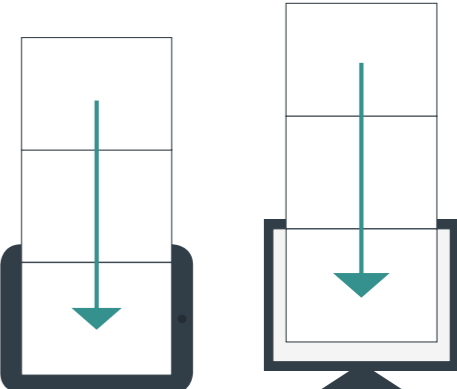
To maximise the impact of your interactive lead page, adding further pages (on a vertical scroll) to your lead page creates additional space for your brand message and interactive multimedia content. Encourage the reader to scroll down through up to 7 pages to explore your products in more detail. Additional pages can include text, video, picture galleries and interactive elements.



Example: multi-page advert with two additional scroll pages:

TESTIMONIAL

After researching high quality publications within the industry, we quickly discovered Design & Build Review, and were keen to use them as a platform to promote our Build events to their readers. The team have been fantastic – always very helpful, prompt and of great assistance. We also like to share Design & Build Review's articles internally as a team; they are consistently of high quality and of great interest to us. We would be delighted to work with Design & Build Review on our future events. - **Oliver Kinross**

IF YOU BUY	YOU GET THIS IN HORIZONTAL ORIENTATION (1024 PIXELS x 768 PIXELS ONLY)
 <p>Interactive lead page</p>	 <p>Up to 250 words of copy per page. Requires tablet creative and materials.</p>
 <p>Scroll pages</p>	 <p>Multi-page option on a vertical scroll. Additional charge for each page. Requires tablet creative and materials.</p>

FULL ISSUE SPONSORSHIP



Sponsoring an edition gives your company the most prominent, high-profile position throughout the magazine. Increase awareness of your company among a highly targeted audience by having your logo on the front cover and the contents page of the sponsored edition, and on all mail-outs promoting the edition. This package includes a multi-page advert with two additional scroll pages

SOCIAL MEDIA SPONSORSHIP



Support your advertising campaign with an exclusive social media sponsorship for the duration of one edition, across our wide-reaching social media platforms.

ENGAGE OUR SOCIAL NETWORKS WITH:

- 4 Tweets
- 1 Facebook post
- 1 LinkedIn discussion

Click here to view an interactive example

COMPANY INSIGHT



Our Company Insight option allows you to present a full article of up to 800 words to our readers, beautifully designed in a template that fits with the editorial content of the magazine.

OUR ADVERTISERS INCLUDE:



*ALL PRICES ARE INCLUSIVE OF A PRODUCTION CHARGE

	3 ISSUES	6 ISSUES	12 ISSUES
FULL FLAT PAGE	£6,450	£11,700	£21,000
	€9,075	€17,100	€31,800
	\$12,810	\$23,820	\$43,200
INTERACTIVE LEAD PAGE	£8,925	£16,650	£19,800
	€12,675	€23,700	€43,800
	\$18,075	\$33,000	\$59,400
INTERACTIVE LEAD PAGE + ONE ADDITIONAL SCROLLING PAGE	£14,925	£22,050	£37,800
	€20,925	€38,400	€69,000
	\$28,575	\$52,800	\$95,400
INTERACTIVE LEAD PAGE + TWO ADDITIONAL SCROLLING PAGES	£20,925	£38,250	£55,800
	€28,575	€53,100	€93,000
	\$37,875	\$69,000	\$126,600
INTERACTIVE LEAD PAGE + THREE ADDITIONAL SCROLLING PAGES	£26,925	£49,050	£73,800
	€35,175	€64,200	€115,800
	\$43,275	\$79,800	\$149,400
ISSUE SPONSORSHIP PACKAGE WITH INTERACTIVE LEAD PAGE	£25,200	£48,000	£91,200
	€31,590	€60,180	€99,600
	\$43,437	\$83,700	\$145,800
SOCIAL MEDIA SPONSORSHIP PACKAGE	£8,925	£15,900	£29,400
	€12,675	€23,700	€43,800
	\$18,075	\$33,000	\$59,400
COMPANY INSIGHT	£6,000	£11,400	£21,600
	€8,400	€16,200	€31,200
	\$12,600	\$24,000	\$45,600

No technical knowledge needed – We can build your advert for you

Don't worry if you're not technical, or don't have the resource to create your advert. Our design team can work with you to create your advert with your basic materials.

In this case, all you need to supply is the following:

- Any images and logos you would like to include. Images in RGB and as high resolution as possible. Logos ideally vectored **.eps** files
- Text (inc contact details and links) as a Word document - Up to 250 words per page you have booked
- Company brand guidelines (fonts, colours etc)
- Design brief as a guide for our designers, covering what you would like to include in the advert, along with any ideas on how you would like the advert to look

ISSUE SPONSORSHIP

If you have purchased the issue sponsorship option, please also provide your company logo as a high resolution **.eps**, **.ai** or **.tif** file.

SUBMITTING YOUR ADVERT

Please email materials to **copy@pmgoperations.com**. Our email gateway blocks emails over 8MB. If your files are too big to submit by email please use a file sharing service, for example **www.wetransfer.com** or **www.dropbox.com**

Prefer your own design team to build your advert?

Alternatively, if you would like to supply a completed advert, please submit your advert according to the below specifications. If you need further information, please contact your client services executive and we'll be happy to help.

We can only accept one of the following file types:

- ▶ **Packaged InDesign file** with animation created in the Overlays Panel only
See side panel for more information >
- ▶ **Adobe Edge Animate or Adobe Animate OAM file**
Edge publish settings: Tick 'Animate Deployment Package', no poster image, tick 'Transparent'.
Animate: Tick 'OAM package', tick 'Transparent'.
See side panel for more information >
- ▶ **HTML, CSS and Javascript files.**
Please provide these files **at least 3 weeks prior to the magazine publication date** in order to be uploaded and tested.

**PLEASE ZIP AND
SEND ALL FILES
AND FOLDERS**

DOCUMENT SIZE:
WIDTH: 1024 pixels
HEIGHT: 768 pixels
(PER PAGE PURCHASED)

**COLOUR
FORMAT:
RGB**

VIDEO (Optional):
FORMAT: H.264
MAX SIZE: 35MB
**PROVIDE A WIREFRAME
TO SHOW VIDEO POSITION**

Design recommendation:
Body text - minimum 16pt

The Overlays Panel in InDesign can be found in these versions: CS6, CC2014 & CC2017.

To install Adobe Edge Animate > GO HERE

Edge Animate best practices: > GO HERE

Edge Animate tutorials: > GO HERE

If you have to use non-standard or non-Typekit fonts in your Edge Animate file create your text in Illustrator and copy and paste into Edge Animate.

Unfortunatley we cannot accept animation created in Flash (or similar 3rd party software) or the Animation Panel in InDesign

Please submit your advert according to the following specifications.

If you need further information, please contact your client services executive and we'll be happy to help.

YOUR CONTENT

The company insight article is an opportunity to share information about your company's expertise and services with your peers.

Aim to write a general introduction before moving on to more in depth details about a particular product or service that you offer.

Bear in mind that a highly technical piece is inappropriate for the readership and the publication as a whole.

The article will be labelled 'Company Insight'. We will lay the page out with a headline, stand first, main text, pull quote, contact details and supporting elements such as tables or images. You can write the article in prose form, or in a questions & answers style.

ARTICLES MUST BE:

- Informative: they must add to the knowledge base
- Original: they should not, ideally, have been published previously
- Appropriate for the readership in terms of register and tone.

PLEASE BEAR IN MIND THE FOLLOWING POINTS:

- The maximum word count for the article body is 800 words. In addition, please supply a headline, standfirst (introduction to the article, up to 50 words) and captions for your images.
- We encourage you to submit up to three supporting elements such as images and tables as this will make for a more visually interesting page.
- We will not publish company logos in these articles.
- The sub-editor will cut anything they consider inappropriate, irrelevant, libellous etc.
- They will also correct grammar and spelling, and may restructure the article if necessary
- All text must meet our house style to ensure quality and consistency.
- Contact details will consist of your company name and up to two further pieces of information, for example website address, telephone number or email address.

ISSUE SPONSORSHIP

If you have purchased a full issue sponsorship as part of your package, please supply your company logo in **.eps** format in addition to the other materials.

SUBMISSION:

- You can submit your article by email in a Word document.
- Please provide all images in **.tif, .jpg, .png** or **.eps** format at high resolution (minimum of 300dpi).
- All images must be supplied as separate image files. We can't accept images embedded in Word documents or Outlook messages as the image quality would not be sufficient.
- Please email materials to **copy@pmgoperations.com**
- Please note: our email gateway will block emails if they are over 8MB. If your files are too big to submit by email you can upload them via a file sharing service (for example **www.wetransfer.com** or **www.dropbox.com**)

POST SUBMISSION

You will receive a fully laid-out proof of your article for review prior to publication.

We reserve the right to return articles that do not meet the standards of the publication.

Please submit your advert according to the following specifications.

If you need further information, please contact your client services executive and we'll be happy to help.

THE PACKAGE INCLUDES:

- **4 Tweets**, posted on the publication's Twitter account at a rate of one per week, starting with the issue publication date
- **1 Facebook post**, posted on the publication's Facebook page one week after the issue publication date
- **1 LinkedIn discussion**, posted on the publication's LinkedIn group two weeks after the issue publication date

MATERIALS REQUIRED

Please note the word limits are due to each social media platform's requirements and cannot be exceeded. If copy exceeds the word limit it will be shortened to fit by our editors.

- **Tweets**

Please supply copy for 4 Tweets. Word limit: 136 characters per Tweet.

If you are including images, please use **.jpg** files and indicate which Tweet they belong to. **Note: Including a URL will use up 22 characters. Up to 4 images can be included in each Tweet; each image counts as 23 characters.**

- **Facebook**

Please supply up to 500 words of text.

Optional: You can include up to 10 images, and a caption of up to 200 words for each image.

- **LinkedIn**

Please supply a subject line of up to 200 characters and a message of up to 4000 characters.

A URL can be included. Images cannot be included.

SUBMITTING YOUR COPY

- Please submit your materials to **copy@pmgoperations.com**
- Please note: our email gateway will block emails if they are over 8MB. If your files are too big to submit by email you can upload them via a file sharing service (for example **www.wetransfer.com** or **www.dropbox.com**)
- All materials for the package must be received by the copy deadline. If the materials are not complete by this date, we will be unable to fulfil the package.

LET'S TALK

Web: www.nridigital.com

Email: magsales@nridigital.com

HEAD OFFICE

Net Resources International
John Carpenter House
John Carpenter Street
London, EC4Y 0AN

T: +44 (0) 20 7936 6750

F: +44 (0) 20 7411 9801